

**ES EUROTRANSICION-292A**, Perfil autoadhesivo de aluminio para transiciones entre parquets o diferentes tipos de pavimento, que permite vencer desniveles entre 10 y 15 mm. La Eurotransición se presenta en aluminio anodizado o en acabado decorativo de madera (lámina de PVC resistente a los productos habituales de limpieza no abrasivos)

**EN EUROTRANSICION-292A**, Self-adhesive aluminium profile for transitions between parquets or different types of flooring which allows unevenness of between 10 and 15 mm to be overcome. The Eurotransition is made of anodised aluminium or a decorative wooden finish (PVC sheet resistant to the usual non-abrasive cleaning products).



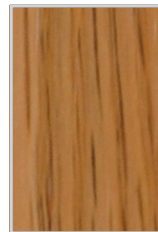
Roble Claro (RC)



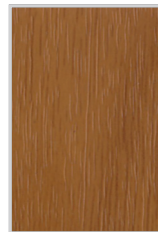
Roble Natural (RN)



Haya (HA)



Roble (RO)



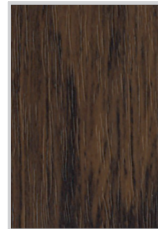
Cerezo (CE)



Sapelly (SA)



Nogal Satinado (NS)



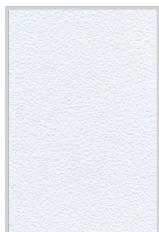
Nogal (NO)



Madera Gris Claro (MGC)



Madera Gris (MG)



Blanco 2 (BL2)



Plata Mate (PM)



Oro Mate (OM)

Ref. Ref.	Colores Colours	Altura (h) Height (h)	Longitud Lenght	Unidades / Caja Units / Box
292A/AD Aluminio 292A/AD Aluminium	Blanco 2 White 2	10 - 15 mm. 3/8" - 9/16"	1 m. 3,28 ft.	10
	Plata mate Matt silver			
	Oro mate Matt gold			
	Roble claro Light Oak			
	Roble natural Natural Oak			
	Haya Beech			
	Roble Oak			
	Cerezo Cherry			
	Sapelly Sapelly			
	Nogal satinado Satin Walnut			
	Nogal Walnut			
	Madera G. Claro Light Grey Wood			
	Madera gris Grey Wood			

(AD) Autoadhesivo / Self-adhesive